

My Little Home In Paris

Cozy bright 2-room flat in the heart of the Latin Quarter, the Left Bank.
On an ancient pedestrian passageway, in a quiet cobblestone courtyard.

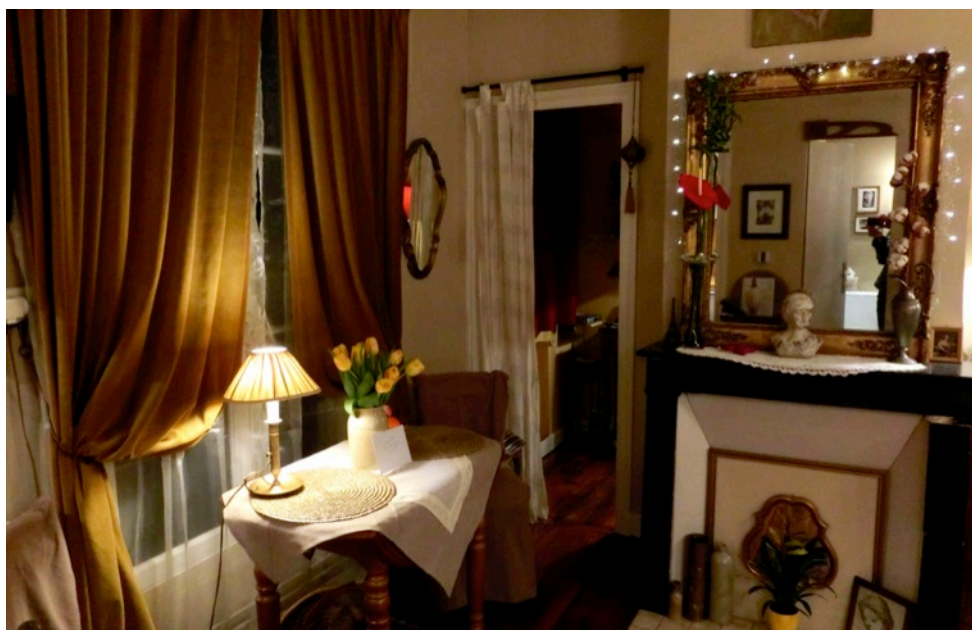
Maximum 3 guests.



Sandy & Philippe
mylittlehomeinparis@gmail.com

Google Map Location:

<http://goo.gl/maps/REwZb>



18th century rustic charm with all the comforts and conveniences of the 21st century!
Original warm wood floors, stone fireplace and homy decor add a touch of romance...

Top floor of a 2-story building: 1 flight of stairs
Security code provides access.

Fully equipped and well-stocked pocket-size kitchen

Luxurious bathroom - full tub and shower, unlimited hot water, hair dryer, curling iron, shower and bath gels, body lotions, fluffy towels and facecloths, a generous supply of toilet paper!

A very safe and lively Parisian neighborhood with a village atmosphere!

AMENITIES HIDDEN TREASURES

Bienvenue chez vous!
Welcome Home!

You are traveling all this way
to see our beautiful city and
we want to pamper you!

Your Little Home has
everything to make you feel
right at home:

flowers, wine, fresh fruit,
chocolates, a full-stocked
kitchen, fresh linens, fluffy
towels, an array of body
lotions, shampoos, bath and
shower gels, a bountiful
collection of guide books,
maps, dictionaries, art books,
magazines, a choice
selection of novels...
and hidden treasures waiting
to be discovered and
enjoyed!



Fiber optic provides TV with 5 English-speaking channels, including BBC World, CNN, France 24; free international phone service; a Mac laptop computer, WIFI, and a French cell phone at your disposal.

3 modern automatic LAVERIES (laundromats) just steps from the apartment.

No check-in / No check-out times!

Your little home is ready to welcome you any time, day and night.
If incoming and outgoing guests should overlap, check-in and check-out times can be arranged to everyone's convenience, including luggage storage.

Early or late, we will be there to welcome you !



In Your Backyard

Place de la Contrescarpe, the famous rue Mouffetard - the market street and former Via Roma, the Arènes de Lutèce, the Panthéon and l'Eglise Saint Etienne du Mont, the Jardin des Plantes and the Natural History Museum, the Sorbonne...

Within a 10-minute walk from your door : Luxembourg Gardens, Notre Dame Cathedral & Ile Saint-Louis, Shakespeare & Company, the Seine, Hotel de Ville...

Easy walking distance to many historic and cultural sites, monuments and museums: Sainte Chapelle, Centre Pompidou, Odeon, St Germain des Prés, the Louvre, Palais-Royal, the Musée d'Orsay...

You can even walk to La Tour Eiffel! But save your feet for the Eiffel Tower... and take the 63 Bus, a 5-minute walk from your door!

Two metros and several bus lines are within steps of your door!

